

J[®]
109

A Genuine, Fun-to-Sail, Dual-Purpose Yacht
With an Outstanding Race Record.



Speed and Handling That Will Put a Smile on Your Face

From Concept to Winning Results, Race or Cruise.

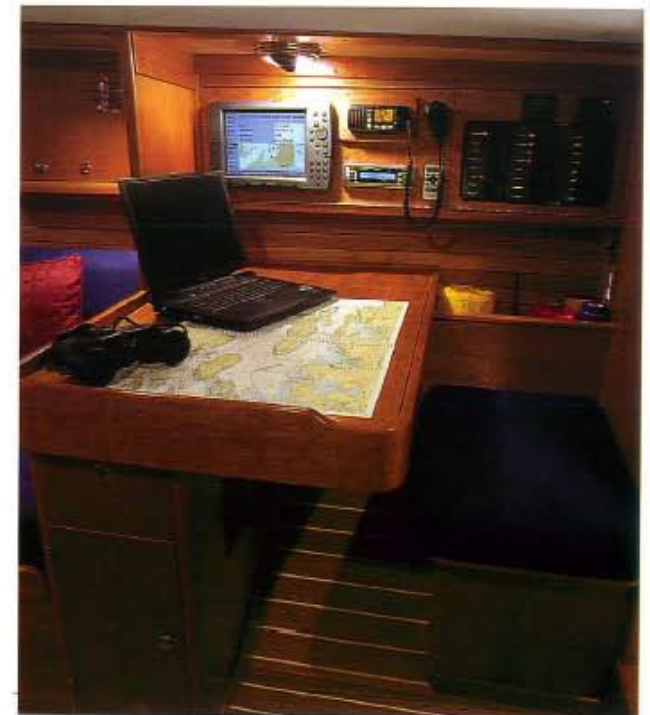
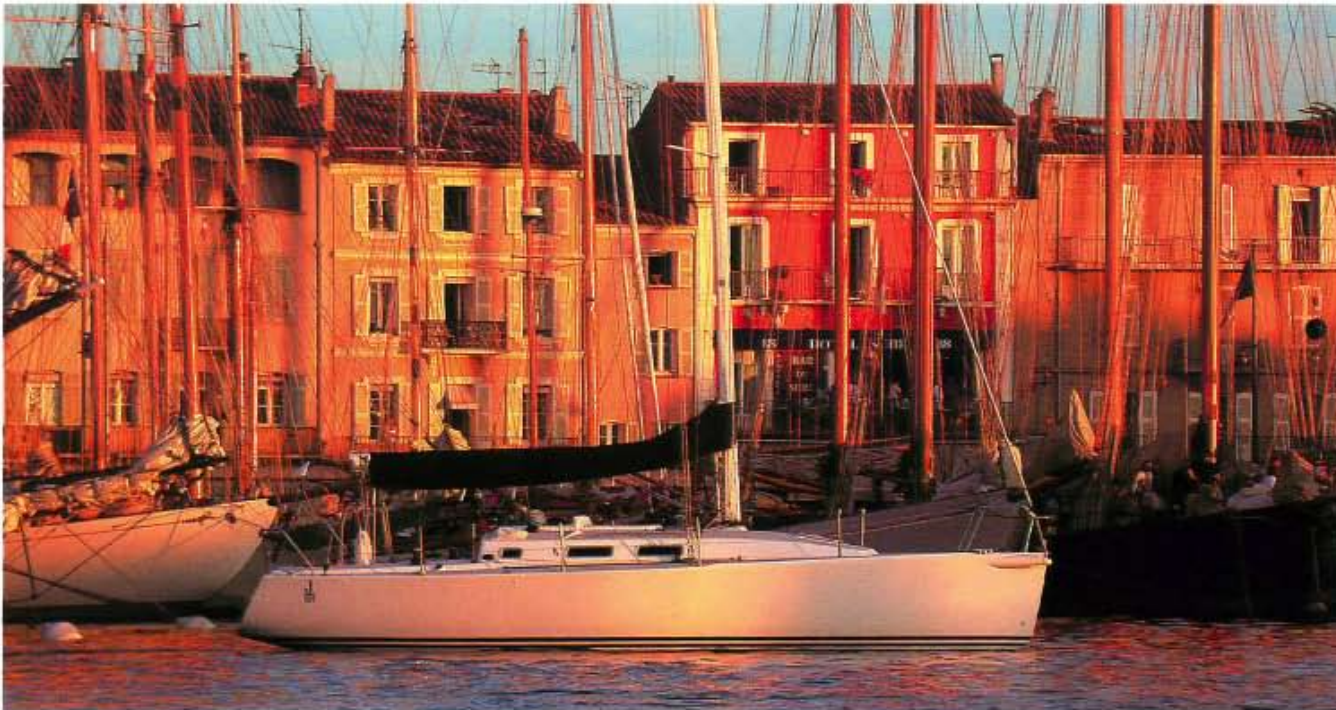
Designed the J Boats way, to the rule of the sea, you get a lot more sailing joy out of 35 feet in the J/109 than any other boat we know. No matter what your sailing plans, J/109 can take you as far as you want to go. The concept is simple: combine race-winning sailing performance with true live-aboard comfort in a boat that can be easily managed by one or two people. This concept has proven to be a winner. The J/109 is lively enough to hold the interest

of youngsters yet stable enough to instill sea-going confidence in sailors of all ages. The boat accelerates in the lightest of puffs, and short-tacks nimbly through narrow channels under mainsail alone. From the outset, at her European debut, J/109 has been winning highly-competitive race weeks and offshore events on both sides of the Atlantic, not to mention local weekend club races with shorthanded or family crews. It's not surprising that with a boat of such universal appeal and with J Boats' legendary

support of one-design classes, enthusiastic J/109 owners have been motivated to form fleets across the U. S. and Europe. Class racing is taking off.

The Right Balance of Speed and Comfort.

The J/109 has a long, narrow waterline and low wetted-surface for speed and seagoing comfort. A large sail plan generates exceptional light-air performance. J/109's low VCG (vertical center of gravity) provides good stability



Easy, Efficient Sail-Handling for Cruising or Racing

for shorthanded sailing (meaning less crew on the rail). You'll find the large cockpit with wheel steering to be ideal for daysailing with friends.

The lead keel is optimized in section and profile. J/109's steering system features a large-diameter wheel and self-aligning rudder bearings for fingertip control of the high-aspect, balanced spade rudder. For unmatched durability and resale value, the J/109's hull, deck, and keel-support structures are built using SCRIMP™ resin-infusion composite technology, producing a laminate nearly twice as strong as that in boats built with hand lay-up methods.



Having Fun Under Sail, the J Boats Way.

When you buy a "J" you are assured that the quality of the gear and functionality of the deck layout have been developed and tested by world-class sailors under the most grueling of race conditions. That means, when you go out with just a friend or family crew, the sailing experience is going to be both fun and easy. Halyards and reef lines are led aft to the cockpit. The double-ended mainsheet and traveler controls are within reach of the wheel. And the asymmetric spinnaker, flown from a retractable carbon-fiber bowsprit, can be jibed and doused by just one person. J/109 delivers the ultimate in simplified, shorthanded sailing performance.



Safety, Comfort, and a Place for Everything.

The J/109's cockpit is safe and secure underway, yet comfortable for entertaining. Sidedecks are wide and flat for sure-footing. There's ample stowage in a cockpit seat locker, bow locker (large enough for anchor rode and asymmetric spinnaker in its cockpit-operated snuffer sock) and in a removable transom locker that can become an instant dock-box. Because the J/109 needs only a mainsail and 100% jib to cruise fast, your sail inventory can be modest. And after most sailing days, with the jib rolled up, the mainsail stowed on the boom, and the spinnaker in the bow locker, there are no sailbags cluttering the main saloon.

Three-Cabin Cruising Interior To Make You Feel At Home

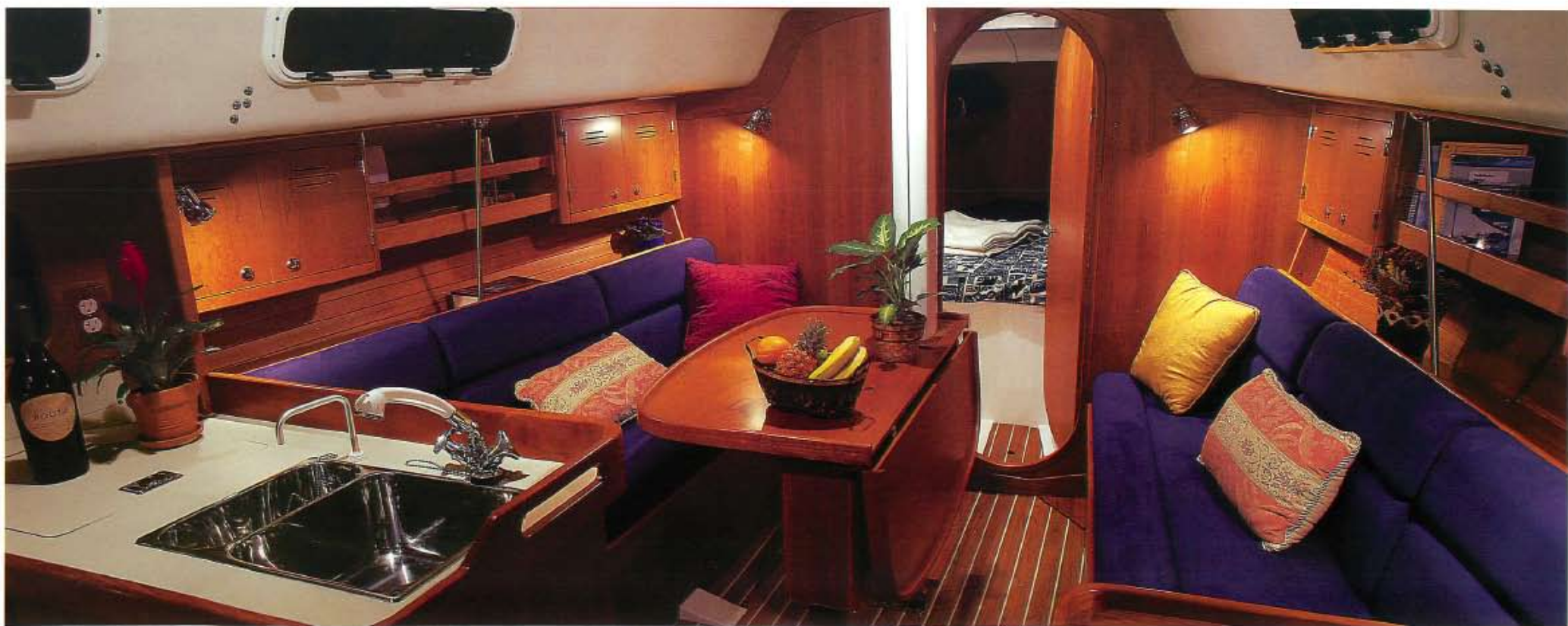
Privacy, Good Joinerwork, and a Spacious Interior.

The J/109 has a surprising amount of room and privacy below with its three-cabin layout. There's an optional pull-out double berth in the main cabin if your plans include extra guests or sleeping a full race crew. Joinerwork is satin-varnished cherry, with hullside cherry battens in the main cabin. The deluxe, bolstered cushions are available in a wide range of designer fabrics. Both sleeping cabins feature a hanging locker and full-length

above-berth shelf stowage. The roomy main saloon features full headroom throughout, settee berths with shelves outboard, a dining and entertainment area for six, and a varnished drop-leaf table with bottle storage. The navigation station, with an easy-access electrical panel, has chart and tool stowage and lots of space for instruments. The J/109's L-shaped galley includes a stainless-steel double sink, two-burner propane stove with oven, plenty of stowage for utensils and cookware, and a flip-lid trash bin.

J/109 May Redefine the Way You Sail.

J/109 owners have told us that the J/109 is their "perfect boat"—the ideal marriage of true cruising comfort and sailing performance, whether daysailing, racing, or cruising. So, no matter what your sailing plans may be, chances are you'll love the J/109. We invite you for a test drive. We're reasonably sure you'll discover that this nimble 35-footer, with its unbeatable combination of speed, safety, and comfort, is also your "perfect boat."





Top Ten Award, SAIL Magazine

Winner, Fastnet Race (England)

1,2,3, Cowes Week (England)

Winner, Verve Cup (Chicago)

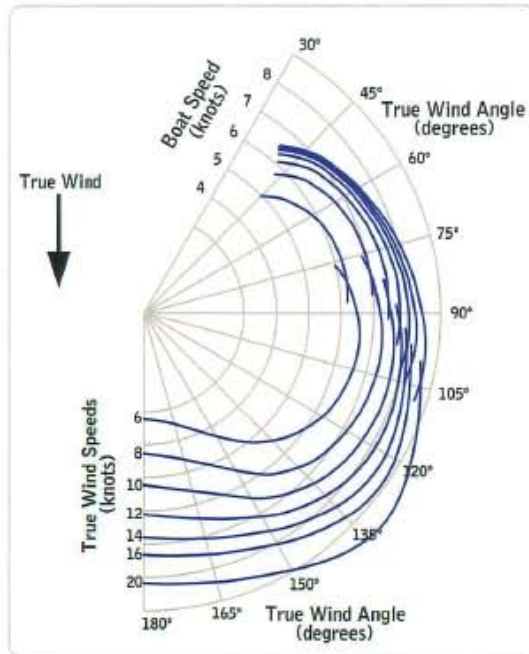
Winner, North Sails Week (CA)

Winner, Atlantic Cup (France)

**Overall Winner, Round Britain
Doublehanded Race**



J/109 Specifications



| | U.S. (feet) | Metric (m) |
|----------------|-------------|------------|
| LOA | 35.25 | 10.75 |
| LWL | 30.50 | 9.30 |
| Beam | 11.50 | 3.51 |
| Standard Draft | 7.00 | 2.10 |
| Shoal Keel | 5.75 | 1.75 |
| Displacement | 10,900 | 4,944 |
| Ballast | 3,900 | 1,769 |
| Engine | 28-hp | 28-hp |
| 100% Sail Area | 644 | 59.8 |
| SA/Dspl | 21 | 21 |
| Dspl/L | 172 | 172 |
| Headroom | 6' 2" | 1.88 |

Specifications are subject to change without prior notice or obligation



Box 90, 557 Thames Street, Newport, RI 02840, U.S.A.; Tel: 401-846-8410; Fax: 401-846-4723; Email: info@jboats.com; Web: www.jboats.com